

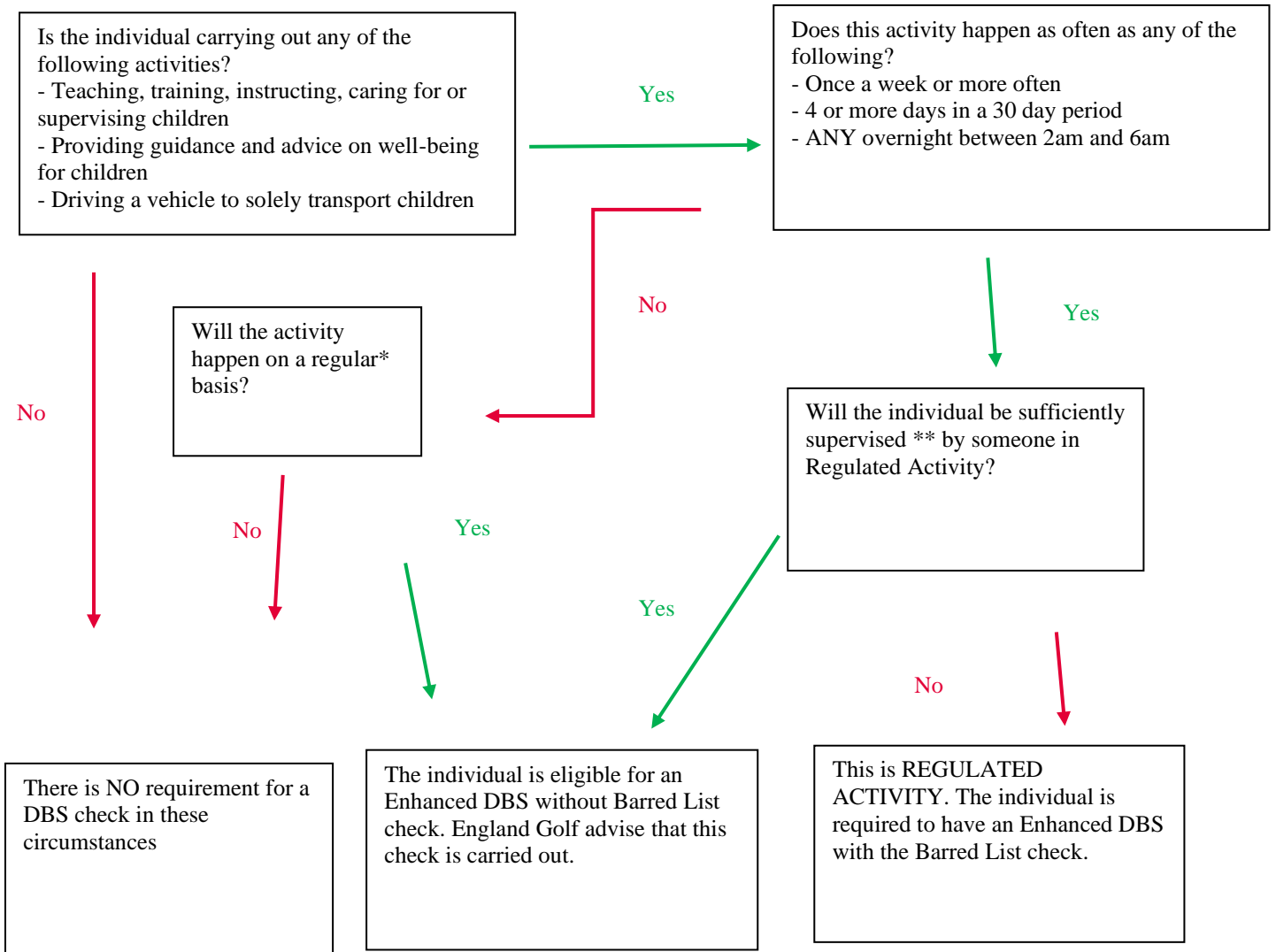


# Lansil Golf Club

## Lansil Golf Club

### Appendix 17

#### England Golf DBS Flowchart



\* Regular is open to definition - it is suggested that annually would be insufficient but an argument for eligibility could be made if the individual does an activity once a month or a number of times over the summer period, for example.

\*\*Supervision must be 'reasonable in all the circumstances to ensure the protection of children'. It must be 'regular and day to day' (supervision must not be concentrated in first few weeks and then tail off). Supervision must be undertaken by someone who is in Regulated Activity themselves.